



# SPECIFICATIONS:

## Series II VNA PivotMast Lift Truck

### 3,000 lb. & 4,000 lb. Capacity

**LANDOLL CORPORATION**  
 1900 North Street • Marysville KS 66508  
 Phone: 785-562-5381 • Fax: 785-562-4853

### STANDARD FEATURES:

- Four-wheel design
- Rear-wheel steering
- Dual front wheel differential drive
- 90° Pivoting and shifting mast
- High visibility mast
- 36 or 48 volt electrical system
- Landoll FL2 MOSFET traction motor controller
- Landoll FL2 MOSFET hydraulic motor controller
- Landoll FL3PS MOSFET power steering motor controller
- Multi-function hydraulic controls
- On demand hydraulic power steering
- Driver's adjustable overhead guard
- Foot pedal controlled Hall effect traction accelerator
- Lift lever controlled Hall effect hydraulic lift accelerator
- Hand actuated parking brake
- Foot pedal controlled hydraulic service brakes
- Programmable keyless start with supervisor security feature
- Ergonomically designed operator compartment:
  - Sit down operator position
  - Adjustable seat
  - Tilting and telescoping steering column
  - Hand lever directional control and horn
- Full function dash display:
  - System monitoring LED's
  - Controller programming
  - Fault display and hour meters
- Battery discharge indicator with lift interrupt
- Articulated steer axle
- Polyurethane drive tires
- Polyurethane steer tires
- Safety seat switch
- Horn
- Tow hitch
- Rear view mirror

### OPTIONAL FEATURES:

- -20°F cold storage conditioning
- Overhead guard mounted headlights
- Overhead guard mounted flashing warning light (amber)
- 2 rear safety light bars (park, reverse and brake lights)
- Flashing back up light
- Type "EE" electrical rating
- Long load handling package
- Back-up alarm - beeping
- Back-up alarm - talking
- Fire extinguisher
- Auxiliary hydraulic functions
- Non-standard load backrest
- Battery compartment roller/slide tray

### RECOMMENDED BATTERY SPECIFICATIONS

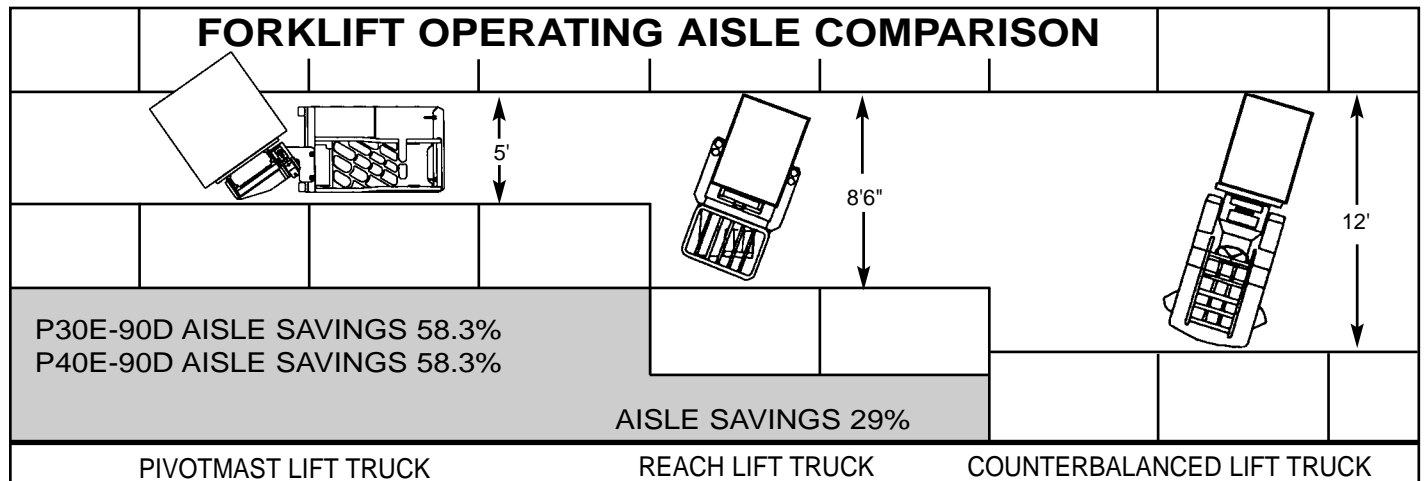
Battery Type	Volts	Amp Hours	Nominal Size
Flooded or sealed	36V	1,105	38 <sup>3</sup> / <sub>8</sub> "x31 <sup>7</sup> / <sub>8</sub> "x23 <sup>5</sup> / <sub>8</sub> "
Flooded or sealed	48V	765	38 <sup>3</sup> / <sub>8</sub> "x31 <sup>7</sup> / <sub>8</sub> "x23 <sup>5</sup> / <sub>8</sub> "

1. Dealer will select battery size based on the application.
2. Battery compartment inside clear dimension – 38<sup>1</sup>/<sub>2</sub>"x31<sup>7</sup>/<sub>8</sub>"x23<sup>7</sup>/<sub>8</sub>"\*
3. Usage hours will vary with load weight, number of lift cycles, lift height, attachment use and travel distance.

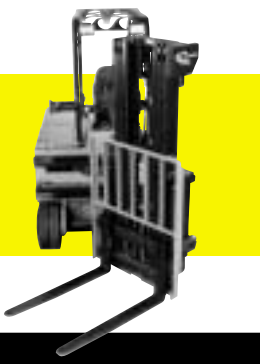
\* Battery size cannot exceed 23<sup>7</sup>/<sub>8</sub>" overall height including lifting tabs, terminals or cable clearance; 22<sup>7</sup>/<sub>8</sub>" overall height when roller-slide out battery tray installed.

4. Minimum battery weight is 3,250 lbs. – Maximum weight is 3,400 lbs.
5. Order battery with SB350 connector – grey for 36 volt and blue for 48 volt. Exit A; 18" leads; without cover.

The specifications contained in this brochure are subject to change at any time without notice. Actual dimensions and performance data given herein may vary due to manufacturing tolerances



VERY NARROW AISLE FORKLI



# SPECIFICATIONS:

## Series II VNA PivotMast Lift Truck

3,000 lb. & 4,000 lb. Capacity

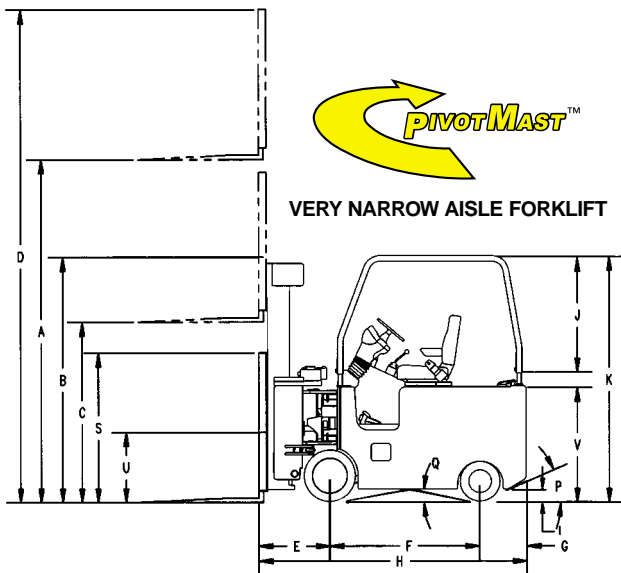
### DIMENSIONS

TRUCK	P30E-90D		E	F	G	H	I	J	K	L	M	N	O	P	Q	R	S	T	U	V
	IN.	23	50	16	89	4	39	85	44	37	20	3	23°	9°	24	48	85	24	41	
	CM.	58	127	41	226	10	99	216	112	94	51	8			61	122	216	61	104	
TRUCK	P40E-90D		E	F	G	H	I	J	K	L	M	N	O	P	Q	R	S	T	U	V
	IN.	23	50	16	89	4	39	85	44	37	20	3	23°	9°	24	48	85	24	41	
	CM.	58	127	41	226	10	99	216	112	94	51	8			61	122	216	61	104	

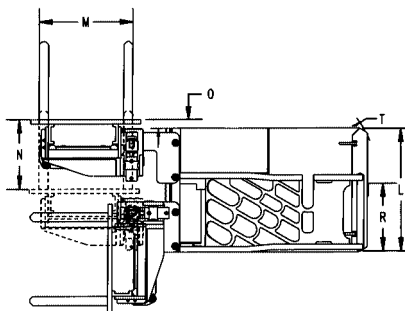
SPECIFICATIONS	LOADED	P30E-90D	P40E-90D	MAST TILT	DEGREES	P30E-90D	P40E-90D
		GRADEABILITY	12%				3° FRWD. 4° BACK
CAPACITY AT 24" L/C	LBS.	3,000	4,000	POLYURETHANE	IN.	18x9x12 1/8	
	KG.	1,361	1,814	DRIVE TIRE	CM.	46x23x31	
FORK SIZE (STANDARD)	IN.	1.5x4x36		VOLTAGE		36 or 48	
ITA CLASS II	CM.	3.8x10x91					
LIFT SPEED	EMPTY	70 FT/M / 230 M/M		LOWERING SPEED	EMPTY	60 FT/M / 197 M/M	
(36 volt)	LOADED	50 FT/M / 164 M/M			LOADED	90 FT/M / 295 M/M	
TRUCK WT. W/BATTERY	LBS.	12,600	13,800	TRAVEL SPEED	EMPTY	6.5 MPH/10.5 KPH	
	KG.	5,715	6,260	(36 volt)	LOADED	6 MPH/9.7 KPH	
POLY STEER TIRES	IN.	14x5x8		MINIMUM BATTERY WT.	LBS.	3,250	
	CM.	36x13x20			KG.	1,474	

MAST DIMENSIONS	MAST TYPE	A MAX. FORK HEIGHT		B COLLAPSED HEIGHT		C FREE LIFT HEIGHT		D MAX. OVERALL HEIGHT	
		(IN.)	(CM.)	(IN.)	(CM.)	(IN.)	(CM.)	(IN.)	(CM.)
TRIPLE	188	478	84	213	58	147	236	599	
TRIPLE	198	503	88	224	62	157	246	625	
TRIPLE	216	549	96	244	70	178	264	671	
TRIPLE	230	584	102	259	76	193	278	706	
TRIPLE	251	638	113	287	87	221	299	759	
TRIPLE	272	691	122	310	96	244	320	813	
QUAD	240	610	84	213	59	150	288	732	
QUAD	258	655	90	229	65	165	306	777	
QUAD	276	701	96	244	71	180	324	823	
QUAD	294	747	102	259	77	196	342	869	
QUAD	312	792	108	274	83	211	360	914	

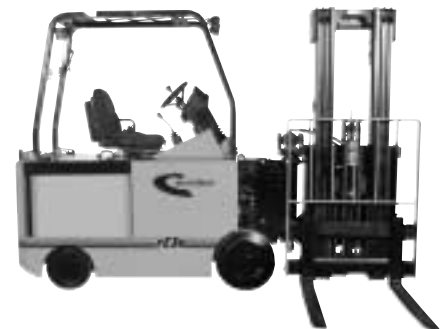
ABOVE DIMENSIONS ARE BASED ON 4" MAST UNDERCLEARANCE.



VERY NARROW AISLE FORKLIFT



SPECIFICATIONS:  
MODELS  
P30E-90D  
P40E-90D



VERY NARROW AISLE FORKLIFT